



www.chaoqian.com

浙江超前通信科技股份有限公司

ZHEJIANG CHAOQIAN TELECOMMUNICATION TECHNOLOGIES CO., LTD.

地址：浙江天台始丰街道中元路 8 号

Add: No. 8 Zhongyuan Road, Shifeng District, Tiantai, Zhejiang, China.

邮编 / PC: 317200

电话 / Tel: +86(576)8398 6755 8398 6805

传真 / Fax: +86(576)8398 6359 8398 6667

E-mail: trade@chaoqian.com service@chaoqian.com



Turn idea
Into reality

浙江超前通信科技股份有限公司

ZHEJIANG CHAOQIAN TELECOMMUNICATION TECHNOLOGIES CO., LTD.

ODN
Solution provider

将需求理想 变成现实

Turn idea Into reality

CONTENTS

COMPANY INTRODUCTION
公司简介

01

FIBER OPTIC SPLICE CLOSURE
光缆接头盒系列

05

FIBER OPTIC DISTRIBUTION BOX
光缆分纤箱系列

35

FIBER OPTIC TERMINAL BOX
光缆终端盒系列

41

FIBER OPTIC SPLICE CABINET &
SHEET METAL BOX
光交及钣金箱系列

47



浙江超前通信科技股份有限公司成立于1992年，是国家高新技术企业、省创新型示范企业、专利示范企业，资信等级AAA企业。公司位于天台县西工业园区，建筑面积逾5万平方米。

公司已通过 ISO9001:2000 质量管理体系认证、ISO14001:2004 环境管理体系认证、OHSAS18001:2007 职业健康安全管理体系认证。

超前® 超前Chaoqian® 商标被认定为浙江省著名商标。

公司成立以来，超前一直把技术创新作为公司发展的源动力，专注研发、生产 ODN 产品：光缆接头盒、光缆分纤箱、光缆交接箱、光缆终端盒、光纤配线架、网络机柜、多媒体箱等系列产品。拥有 53 项国家专利，2010 年“低损耗高密度封装无源光分路交接件”获得国家中小企业技术创新基金，2016 年“即插即用高密度封装 FTTH 专用盒”登记为浙江省科学技术成果。

超前覆盖全球的销售和服务网络，为运营商及通信企业提供优质快速的全程服务，公司的技术创新赢得国内外客户的赞誉。

超前恪守“把需求理想变为现实”的企业精神，将进一步创新技术、做精品、做优质服务，把公司建设成为国内领先、国际知名的 ODN 设备供应商，努力为客户创造最大价值，实现与客户的双赢发展。

Zhejiang Chaoqian Telecommunication Technologies Co., Ltd. was founded in 1992, and is national high-tech enterprise, provincial innovative model enterprise, Patent Demonstration Enterprise, credit rating AAA enterprise. Our factory is located at Tiantai western industrial zone, with over 50,000 square meters of construction area.

Chaoqian has passed ISO9001: 2000 quality management system certification, ISO14001: 2004 environmental management system certification, OHSAS18001: 2007 occupational health and safety management system.

The company logos 超前® & 超前Chaoqian® are identified as Zhejiang famous brands.

Technology innovation is the source of development since establishment of the company. Chaoqian keeps focusing on R & D, production of ODN products. And our products include fiber optic splice closure, distribution box, splice cabinet, terminal box, optical distribution frame, network cabinet, multimedia box, etc. We've got 53 national patents up till now, and our self-developed low-loss high-sealed passive optical fiber distribution and splitter connection device was rewarded 'National Innovation Fund Award' in 2010, and our 'Plug and play high-sealed self-locking FTTH box' was registered as Zhejiang scientific and technological achievements in 2016.

Our worldwide sales and service network provides fast and high quality service for all the customers, and our technology innovation wins praises from both domestic and foreign customers.

Chaoqian will always follow the Entrepreneurial spirit 'Turn Ideas Into Reality', keeps innovating technology, improving products and service. To be the leading supplier for ODN equipments, creating maximum value for our customers.

公司拥有数控冲床、数控剪板机、数控塑料成型机等设备。

we owned NC punching machine, NC cutting machine, NC bending machine, NC plastic mould-shaped machine, etc.



年产量：箱体 20 万套，盒体 500 万套

Annual output: 200,000 sets of boxes, 5,000,000 sets of closures.

完善的检测设备确保了品质符合国际标准要求

The complete inspection equipments can assure products quality to meet the international standard.



QUALITY MANAGEMENT

质量管理



公司按照现代企业制度的要求建立了科学的管理体系，通过了 ISO9001:2008 质量体系认证；建立了覆盖全国二十多个省、市的营销网络，客户分布于电信、移动、联通、广电、部队、公安、电力等领域。并出口波兰、沙特、意大利、马来西亚等欧洲、东亚地区。

“铸就超前品牌，以质取信天下”是公司追求的永恒目标。公司将秉承“以人为本，创新超前”的经营理念为国内、外客户提供优质、周到的产品服务，和广大客户一起发展，共创世纪辉煌！

Chaoqian has established scientific management system upon requirements of modern enterprises, and passed ISO9001:2008 Quality System Certification. Our products are widely used by customers like China Telecom, China Mobile, China Unicom, China Radio & Television, and exported to worldwide areas like Poland, Saudi Arabia, Italy, USA, Brazil, etc.

"Quality builds brand" is the eternal belief. We persist in "Humanist and Innovation" providing professional and practical services. Chaoqian always devotes itself to the constant conversion between ideal and reality. Custom-made solution with cost saving is also what we keep trying to do for customers.



RESEARCH AND DEVELOPMENT

研发团队

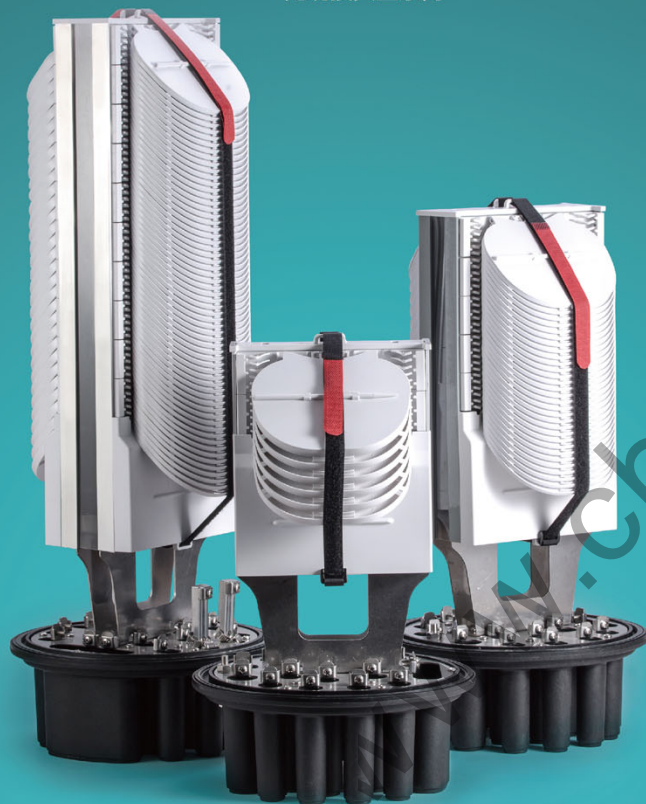
公司注重研发团队建设，拥有一支专业的研发队伍，产品多个项目获得了国家专利。主要产品包括光缆接头盒、光纤配线架、光缆配线箱、光缆交接箱、光缆终端盒等多种类别，多个系列的通信产品。

We were rewarded many national patents with the efforts of our professional R&D Team. Our main products include fiber optic splice closure, distribution box, splice cabinet, terminal box and so on.



FIBER OPTIC SPLICE CLOSURE

光缆接头盒系列



Turn idea Into reality

GPJ09-5817-A

光缆接头盒

FIBER OPTIC SPLICE CLOSURE



4个分枝端口，光缆使用范围：Φ14~20mm
12个分枝端口，光缆使用范围：Φ8~16mm
1个不断断端口，光缆使用范围：Φ10~25mm
4 branch ports for Φ14~20mm cable.
12 branch ports for Φ8~16mm cable.
1 port for Φ10~25mm uncult cable.



7个分枝端口，光缆使用范围：Φ8~17.5mm
2个皮线进出口，可适用不同规格的皮线进出；
1个不断断端口，光缆使用范围：Φ10~22mm
7 branch ports for Φ8~17.5mm cable.
2 ports for different types of soft cable.
1 port for Φ10~22mm uncult cable.



盒体采用机械式密封，端口密封有机械密封和热缩密封可供选择；
Mechanical seal for the box, and optional mechanical seal or heat shrink seal for the cable ports.



多种纤盘可供选择满足熔接和安装光分
Various types of splice trays as options.



产品概述

- 4个分枝端口，光缆使用范围：Φ14~20mm，12个分枝端口，光缆使用范围：Φ8~16mm，1个不断断端口，光缆使用范围：Φ10~25mm；
- 束状光纤容量：12~144芯，可配置12张12芯纤盘或24张6芯纤盘；
- 纤盘可更换为光分纤盘，1张光分纤盘可安装2个1:4和1个1:8微分光分；
- 防护等级：IP68；
- 安装方式：架空、壁挂、直埋等；
- 盒体采用机械式密封，端口采用热缩式密封，密封性能好；
- 有17个进端口可供光纤进出；
- 多种纤盘可供选择满足熔接和安装光分。

DESCRIPTION

- 4 branch ports for Φ14-20mm cable, 12 branch ports for Φ8-16mm cable, 1 port for Φ10-25mm uncult cable.
- Bundle cable capacity: 12-144F. Could be installed with 12 trays, with max capacity 12F for each one or 24 trays, with max capacity 6F for each.
- Splice tray could be replaced with splitter tray, each tray could be installed with 2 X 1:4 and 1 X 1:8 micro type splitter.
- Protection grade: IP68.
- Installation method: Aerial, wall mounting, direct burial, etc.
- Mechanical seal for the box, and heat shrink seal for cable ports. Good sealing performance
- Many different types of splice trays as options.

订购指南 PURCHASE TIP

| 型号 Type | 产品尺寸 Size | 重量 Weight | 内箱尺寸 Inner carton size |
|--------------|------------|-----------|------------------------|
| GPJ09-5817-A | 400×Φ270mm | 5.5-6.2kg | 550×315×285mm(1 pcs) |

GPJ09-5817-B

光缆接头盒

FIBER OPTIC SPLICE CLOSURE

产品概述

- 4个分枝端口，光缆使用范围：Φ14~20mm，12个分枝端口，光缆使用范围：Φ8~16mm，1个不剪断端口，光缆使用范围：Φ10~25mm；
- 束状光纤容量：12~360芯，可配置30张12芯纤盘或60张6芯纤盘；
- 纤盘可更换为分光纤盘，1张光纤纤盘可安装2个1:4和1个1:8微型分光；
- 防护等级：IP68；
- 安装方式：架空、壁挂、直埋等；
- 盒体采用机械式密封，端口采用热缩式密封，密封性能好；
- 有17个进端口可供光缆进出；
- 多种纤盘可供选择满足熔接和安装分光。

DESCRIPTION

- 4 branch ports for Φ14-20mm cable, 12 branch ports for Φ8-16mm cable, 1 port for Φ10-25mm uncult cable.
- Bundle cable capacity: 12-360F. Could be installed with 30 trays, with max capacity 12F for each one or 60 trays, with max capacity 6F for each.
- Splice tray could be replaced with splitter tray, each tray could be installed with 2 X 1:4 and 1 X 1:8 micro type splitter.
- Protection grade: IP68.
- Installation method: Aerial, wall mounting, direct burial, etc.
- Mechanical seal for the box, and heat shrink seal for cable ports. Good sealing performance
- Many different types of splice trays as options.

订购指南 PURCHASE TIP

| 型号 Type | 产品尺寸 Size | 重量 Weight | 内箱尺寸 Inner carton size |
|--------------|-----------|-----------|------------------------|
| GPJ09-5817-B | 500×270mm | 7.5-8.0kg | 650×315×285mm(1 pcs) |



4个分枝端口，光缆使用范围：Φ14~20mm
12个分枝端口，光缆使用范围：Φ8~16mm
1个不剪断端口，光缆使用范围：Φ10~25mm
4 branch ports for Φ14~20mm cable.
12 branch ports for Φ8~16mm cable.
1 port for Φ10~25mm uncult cable.

7个分枝端口，光缆使用范围：Φ8~17.5mm
2个皮线进出口，可适用不同规格的皮线进出；
1个不剪断端口，光缆使用范围：Φ10~22mm
7 branch ports for Φ8~17.5mm cable.
2 ports for different types of soft cable.
1 port for Φ10~22mm uncult cable.



盒体采用机械式密封，端口密封有机械密封和热缩密封可供选择；
Mechanical seal for the box, and optional mechanical seal or heat shrink seal for the cable ports.



多种纤盘可供选择满足熔接和安装分光
Various types of splice trays as options.



GPJ09-5817-C

光缆接头盒

FIBER OPTIC SPLICE CLOSURE



4个分枝端口，光缆使用范围：Φ14~20mm
12个分枝端口，光缆使用范围：Φ8~16mm
1个不剪断端口，光缆使用范围：Φ10~25mm
4 branch ports for Φ14~20mm cable.
12 branch ports for Φ8~16mm cable.
1 port for Φ10~25mm uncult cable.

7个分枝端口，光缆使用范围：Φ8~17.5mm
2个皮线进出口，可适用不同规格的皮线进出；
1个不剪断端口，光缆使用范围：Φ10~22mm
7 branch ports for Φ8~17.5mm cable.
2 ports for different types of soft cable.
1 port for Φ10~22mm uncult cable.

盒体采用机械式密封，端口密封有机械密封和热缩密封可供选择；
Mechanical seal for the box, and optional mechanical seal or heat shrink seal for the cable ports.

多种纤盘可供选择满足熔接和安装分光
Various types of splice trays as options.

DESCRIPTION

- 4 branch ports for Φ14-20mm cable, 12 branch ports for Φ8-16mm cable, 1 port for Φ10-25mm uncult cable.
- Bundle cable capacity: 12-360F. Could be installed with 30 trays, with max capacity 12F for each one or 60 trays, with max capacity 6F for each.
- Splice tray could be replaced with splitter tray, each tray could be installed with 2 X 1:4 and 1 X 1:8 micro type splitter.
- Protection grade: IP68.
- Installation method: Aerial, wall mounting, direct burial, etc.
- Mechanical seal for the box, and heat shrink seal for cable ports. Good sealing performance
- Many different types of splice trays as options.



产品概述

- 4个分枝端口，光缆使用范围：Φ14~20mm，12个分枝端口，光缆使用范围：Φ8~16mm，1个不剪断端口，光缆使用范围：Φ10~25mm；
- 束状光纤容量：12~360芯，可配置30张12芯纤盘或60张6芯纤盘；
- 纤盘可更换为分光纤盘，1张光纤纤盘可安装2个1:4和1个1:8微型分光；
- 防护等级：IP68；
- 安装方式：架空、壁挂、直埋等；
- 盒体采用机械式密封，端口采用热缩式密封，密封性能好；
- 有17个进端口可供光缆进出；
- 多种纤盘可供选择满足熔接和安装分光。

订购指南 PURCHASE TIP

| 型号 Type | 产品尺寸 Size | 重量 Weight | 内箱尺寸 Inner carton size |
|--------------|-----------|-----------|------------------------|
| GPJ09-5817-C | 625×270mm | 9.5-12kg | 775×315×285mm(1 pcs) |

GPJ09-5608

光缆接头盒

FIBER OPTIC SPLICE CLOSURE

产品概述

- 4个分岐端口，光缆使用范围：Φ5~17.5mm。
1个不剪断端口，光缆使用范围：Φ8~17.5mm；
- 束状光纤容量：12~72芯。
- 可安装6张纤盘，每张纤盘最大可熔接12芯；
- 防护等级：IP68；
- 每张纤盘可安装1个1:8的微型分光；
- 安装方式：架空、壁挂、直埋等；
- 盒体及光缆均采用机械式密封操作简便，密封性能好；
- 产品满足余缆、熔接、分光等功能，适用光缆：束状、带状；
- 产品体积小，占用空间小。

DESCRIPTION

- 4 branch ports for Φ5-17.5mm cable.
1 port for Φ8~17.5mm uncut cable.
- Bundle cable capacity: 12-72F.
Could be installed with 6 trays. 12F/per tray in max
- Protection grade: IP68.
- Each fiber tray can be installed with 1 x 1:8 micro type splitter.
- Installation method: Aerial, wall mounting, direct burial, etc.
- Mechanical seal for the box and cable ports.
Good sealing performance.
- Applicable for both bundle cable and ribbon cable.
- Small in size

订购指南 PURCHASE TIP

| 型号 Type | 产品尺寸 Size | 重量 Weight | 内箱尺寸 Inner carton size | 外箱尺寸 Outer carton size |
|------------|------------|-----------|------------------------|------------------------|
| GPJ09-5608 | 395×φ245mm | 2.8-3.2kg | 410x235x205mm(1 pcs) | 740x440x450mm(6 pcs) |



4个分岐端口，光缆使用范围：Φ5~17.5mm。
1个不剪断端口，光缆使用范围：Φ8~17.5mm。
4 branch ports for Φ5~17.5mm cable.
1 port for Φ8~17.5mm uncut cable.

盒体及光缆均采用机械式密封
操作简便，密封性能好

Mechanical seal for the box
and cable ports. Good sealing performance.



纤盘可满足安装分光、熔接，更换卡座可
适用束状、带状光缆
Applicable for both bundle cable
and ribbon cable.



GPJ09-5808

光缆接头盒

FIBER OPTIC SPLICE CLOSURE



4个分岐端口，光缆使用范围：Φ10~25mm；
1个不剪断端口，光缆使用范围：Φ10~25mm。
4 branch ports for Φ10~25mm cable.
1 port for Φ10~25mm uncut cable.



盒体采用机械式密封，端口采用
热缩式密封，密封性能好

Mechanical seal for the box, and
heat shrink seal for cable ports.
Good sealing performance



纤盘设有限位结构，可防止熔接时
纤盘掉落碰断光纤

Splice trays are all tightly fixed
by black buckle when splicing.



纤盘卡座可拆卸，同时满足束状、
带状光缆
Applicable for both bundle cable
and ribbon cable.



产品概述

- 2个分岐端口，光缆使用范围：Φ8~18mm，
4个分岐端口，光缆使用范围：Φ10~25mm，
1个不剪断端口，光缆使用范围：Φ10~25mm；
- 束状光纤容量：12~240芯。
- 可安装5张纤盘，每张纤盘最大可熔接48芯；
- 防护等级：IP68；
- 安装方式：架空、壁挂、直埋等；
- 盒体采用机械式密封，端口采用热缩式密封，密封性能好；
- 纤盘设有限位结构，可防止熔接时纤盘掉落碰断光纤；
- 纤盘卡座可拆卸，同时满足束状、带状光缆。

DESCRIPTION

- 2 branch ports for Φ8~18mm cable, 4 branch ports
for Φ10~25mm cable, 1 port for Φ10~25mm uncut cable.
- Bundle cable capacity: 12-240F.
Could be installed with 5 trays. 48F/per tray in max.
- Protection grade: IP68.
- Installation method: Aerial, wall mounting, direct burial, etc.
- Mechanical seal for the box, and heat shrink seal for cable ports.
Good sealing performance.
- Splice trays are all tightly fixed by black buckle when splicing.
- Applicable for both bundle cable and ribbon cable.

订购指南 PURCHASE TIP

| 型号 Type | 产品尺寸 Size | 重量 Weight | 内箱尺寸 Inner carton size | 外箱尺寸 Outer carton size |
|------------|------------|-----------|------------------------|------------------------|
| GPJ09-5808 | 600×φ260mm | 5.5-6.2kg | 610x280x280mm(1 pcs) | 630x580x595mm(4 pcs) |

GPJ09-5606

光缆接头盒

FIBER OPTIC SPLICE CLOSURE

产品概述

- 6个分枝端口，光缆使用范围：Φ8~15mm。
- 1个不剪断端口，光缆使用范围：Φ10~15mm；
- 束状光纤容量：12~96芯。
- 可安装4张纤盘，每张纤盘最大可容纳24芯；
- 防护等级：IP68；
- 安装方式：架空、壁挂、直埋等；
- 盒体采用机械式密封，端口采用热缩式密封，密封性好；
- 纤盘设有限位结构，可防止熔接时纤盘掉落砸断光纤；
- 余缆操作方便、空间大。

DESCRIPTION

- 6 branch ports for Φ8~15mm cable.
- 1 port for Φ10~15mm uncut cable.
- Bundle cable capacity: 12-96F.
- Could be installed with 4 trays, 24F/per tray in max.
- Protection grade: IP68.
- Installation method: Aerial, wall mounting, direct burial, etc.
- Mechanical seal for the box, and heat shrink seal for cable ports.
- Splice trays are all tightly fixed by black buckle when splicing.
- Easy operation for spare cable with enough space.

订购指南 PURCHASE TIP

| 型号 Type | 产品尺寸 Size | 重量 Weight | 内箱尺寸 Inner carton size | 外箱尺寸 Outer carton size |
|------------|------------|-----------|------------------------|------------------------|
| GPJ09-5606 | 520×φ245mm | 3.8-4.2kg | 540x245x210mm(1 pcs) | 555x510x675mm(6 pcs) |



6个分枝端口，光缆使用范围：Φ8~15mm。
1个不剪断端口，光缆使用范围：Φ10~15mm；
6 branch ports for Φ8~15mm cable.
1 port for Φ10~15mm uncut cable.



盒体采用机械式密封，端口采用热缩式密封，
操作简便，密封性能好
Mechanical seal for box, heat shrink seal
for cable ports, good sealing performance



纤盘设有限位结构，可防止熔接时
纤盘掉落砸断光纤
Splice trays are all tightly fixed by black
buckle when splicing.



余缆操作方便、空间大
Easy operation for cable storage
with enough space.



GPJ09-5607

光缆接头盒

FIBER OPTIC SPLICE CLOSURE



4个分枝端口，光缆使用范围：Φ5~17.5mm。
1个不剪断端口，光缆使用范围：Φ8~17.5mm
盒体及光缆都采用机械式密封操作简便，密封性能好
4 branch ports for Φ5-17.5mm cable.
1 port for Φ8~17.5mm uncut cable.
Mechanical seal, good sealing performance.



纤盘设有限位结构，可防止熔接时
纤盘掉落砸断光纤
Splice trays are all tightly fixed
by black buckle when splicing.



多种密封胶可供选择，
适合多种光缆密封
Applicable for multi cables
by changing the sealing kits



产品概述

- 4个分枝端口，光缆使用范围：Φ5~17.5mm。
- 1个不剪断端口，光缆使用范围：Φ8~17.5mm；
- 束状光纤容量：12~96芯。
- 可安装4张纤盘，每张纤盘最大可容纳24芯；
- 防护等级：IP68；
- 安装方式：架空、壁挂、直埋等；
- 盒体及光缆都采用机械式密封操作简便，密封性好；
- 纤盘设有限位结构，可防止熔接时纤盘掉落砸断光纤；
- 光缆密封胶组件少，操作简便、密封效果佳。

DESCRIPTION

- 4 branch ports for Φ5~17.5 mm cable.
- 1 port for Φ8~17.5mm uncut cable.
- Bundle cable capacity: 12-96F.
- Could be installed with 4 trays, 24F/per tray in max.
- Protection grade: IP68.
- Installation method: Aerial, wall mounting, direct burial, etc.
- Mechanical seal for the box and cable ports.
- Splice trays are all tightly fixed by black buckle when splicing.
- Less cable sealing kit, easy operation and good sealing performance.

订购指南 PURCHASE TIP

| 型号 Type | 产品尺寸 Size | 重量 Weight | 内箱尺寸 Inner carton size | 外箱尺寸 Outer carton size |
|------------|------------|-----------|------------------------|------------------------|
| GPJ09-5607 | 520×φ245mm | 3.8-4.3kg | 540x245x210mm(1 pcs) | 555x510x675mm(6 pcs) |

GPJ09L7-BR-C

光缆接头盒
FIBER OPTIC SPLICE CLOSURE

产品概述

- 6个分歧接口，光缆使用范围：Φ8~18mm，1个不剪断接口，光缆使用范围：Φ10~20mm；
- 束状光纤容量：12~108芯，可配置9张12芯纤盘或18张6芯纤盘；
- 纤盘可更换为分光纤盘，1张分光纤盘可安装2个1:4和1个1:8微型分光，可安装12个适配器；
- 防护等级：IP68；
- 安装方式：架空、壁挂、直埋等；
- 盒体采用机械式密封，接口采用热缩式密封，密封性能好；
- 同时可满足熔接、安装分光、配线。

DESCRIPTION

- 6 branch ports for Φ8~18mm cable, 1 port for Φ10~20mm uncult cable.
- Bundle cable capacity: 12-108F. Could be installed with 9 trays, with max capacity 12F for each one or 18 trays, with max capacity 6F for each one.
- Splice tray could be replaced with splitter tray, each tray could be installed with 2 X 1:4 and 1 X 1:8 micro type splitter, and 12 pcs of adapters.
- Protection grade: IP68.
- Installation method: Aerial, wall mounting, direct burial, etc.
- Mechanical seal for the box, and heat shrink seal for cable ports. Good sealing performance

订购指南 PURCHASE TIP

| 型号 Type | 产品尺寸 Size | 重量 Weight | 内箱尺寸 Inner carton size | 外箱尺寸 Outer carton size |
|--------------|------------|-----------|------------------------|------------------------|
| GPJ09L7-BR-C | 480xφ260mm | 4.5-4.8kg | 480x275x245mm(1 pcs) | 570x500x540mm(4 pcs) |



6个分歧接口，光缆使用范围：Φ8~18mm；
1个不剪断接口，光缆使用范围：Φ10~20mm；
6branch ports for Φ8~18mm cable,
1 port for Φ10~20mm uncult cable.



盒体采用机械式密封，接口采用
热缩式密封。密封性能好；
Mechanical seal for the box, and
heat shrink seal for cable ports



同时可满足熔接、安装分光、配线
Applicable for splicing,
installation of splitters, distribution.



FIBER OPTIC SPLICE CLOSURE

光缆接头盒系列



Turn idea Into reality

GPJ09-8202

光缆接头盒

FIBER OPTIC SPLICE CLOSURE

产品概述

- 接口：不剪断光缆口1个（适用直径10-17.5mm），出接口24个（适用2*3皮线槽，直径3-8mm圆缆）
- 容量：单张纤盘24芯，可安装4张纤盘，最大容量可达96芯。
- 防护等级：IP68。机械密封：密封性能优良，可重复开启。
- 适配器：可安装SC适配器16个
- 光分路器：可安装微型光分路器
- 安装方式：壁挂、柱挂。
- 无螺丝结构，箱体采用翻盖式结构，使用方便。
- 具有在一侧铰链的熔接盘，可以任意操作其中一盘而不会对其它纤盘造成影响，任意盘中光纤也可转接至其它盘中熔接，以加强灵活性。
- 即插即用，实现光纤用户业务的快速开通

DESCRIPTION

- 1 port for uncut cable $\Phi 10-17.5\text{mm}$, 24 cable outlet (applicable for 2x3mm soft cable or $\Phi 3-8\text{mm}$ round cable).
- Capacity: 24F per tray, could be installed with 4 trays, max capacity is 96F.
- Protection grade: IP68. Mechanical seal.
- Installation method: Wall-mounting, Pole-mounting.
- Could be installed with micro type splitters and 16pcs of SC adapters.
- Designed to be flipped over without screw. Easy to use.
- All the splice trays are hinged together at one side, which eases the operation of each tray. Optic fiber will not be damaged because of the mess of transitional tube. Also cables in one tray can be spliced in other trays.
- Plug and play, fast response for new subscribers.

订购指南 PURCHASE TIP

| 型号 Type | 产品尺寸 Size | 重量 Weight | 内箱尺寸 Inner carton size | 外箱尺寸 Outer carton size |
|------------|---------------|-----------|------------------------|------------------------|
| GPJ09-8202 | 380x245x130mm | 3.0-4.0kg | 395x255x165mm(1 pcs) | 540x410x350mm(4 pcs) |



铰链连接，可以任意操作其中一盘而不会对其它纤盘造成影响
All the trays are hinged at one side, independent operation to one tray would not affect others.



即插即用，实现光纤用户业务的快速开通
Plug and play, fast response for new subscribers.



不剪断光缆口1个（适用直径10-17.5mm），出接口24个（适用2*3皮线槽，直径3-8mm圆缆）
1 port for $\Phi 10-17.5\text{mm}$ uncut cable, 24 cable outlet for 2*3mm soft cable or $\Phi 3-8\text{mm}$ round cable.



GPJ09-8203

光缆接头盒

FIBER OPTIC SPLICE CLOSURE



铰链连接，可以任意操作其中一盘而不会对其它纤盘造成影响
All the splice trays are hinged together at one side, which eases the operation of each tray.



接口：不剪断光缆口1个（适用直径10-17.5mm），分接口2个（适用直径6-8mm，10-17.5mm），出接口6个（适用直径6-8mm圆缆）
1 Port for uncut cable $\Phi 10-17.5\text{mm}$, 2 branch ports for $\Phi 6-8\text{mm}$ and $\Phi 10-17.5\text{mm}$ cable, 6 ports for outlet cables ($\Phi 6-8\text{mm}$ round cable).



产品概述

- 接口：不剪断光缆口1个（适用直径10-17.5mm），分接口2个（适用直径6-8mm，10-17.5mm），出接口6个（适用直径6-8mm圆缆）
- 容量：单张纤盘12芯，可安装12张纤盘，最大容量可达144芯。
- 防护等级：IP68。机械密封：密封性能优良，可重复开启。
- 安装方式：壁挂、柱挂。
- 光分路器：可安装微型光分路器
- 无螺丝结构，箱体采用翻盖式结构，使用方便。
- 具有在一侧铰链的熔接盘，可以任意操作其中一盘而不会对其它纤盘造成影响，任意盘中光纤也可转接至其它盘中熔接，以加强灵活性。

DESCRIPTION

- 1 Port for uncut cable $\Phi 10-17.5\text{mm}$, 2 branch ports for $\Phi 6-8\text{mm}$ and $\Phi 10-17.5\text{mm}$ cable, 6 ports for outlet cables ($\Phi 6-8\text{mm}$ round cable).
- Capacity: 12F per tray, could be installed with 12 trays, max capacity 144F.
- Protection grade: IP68. Mechanical seal.
- Installation method: Wall-mounting, Pole-mounting.
- Could be installed with micro type splitters.
- Designed to be flipped over without screw. Compact size brings easy operation and complete function.
- All the splice trays are hinged together at one side, which eases the operation of each tray. Optic fiber will not be damaged because of the mess of transitional tube. Also cables in one tray can be spliced in other trays.

订购指南 PURCHASE TIP

| 型号 Type | 产品尺寸 Size | 重量 Weight | 内箱尺寸 Inner carton size | 外箱尺寸 Outer carton size |
|------------|---------------|-----------|------------------------|------------------------|
| GPJ09-8203 | 380x245x130mm | 3.0-4.0kg | 395x255x165mm(1 pcs) | 540x410x350mm(4 pcs) |

GPJ09-8205

光缆接头盒

FIBER OPTIC SPLICER CLOSURE

产品概述

- 接口：不断光光缆口1个（适用直径10-17.5mm），分岐接口2个（适用直径10-17.5mm），出接口16个（适用2*3皮线缆，直径3-8mm圆缆）
- 容量：单张纤盘24芯，可安装4张纤盘，最大容量可达96芯。
- 防护等级：IP68。机械密封：密封性能优良，可重复开启。
- 适配器：可安装SC适配器16个
- 光分路器：可安装微型光分路器
- 安装方式：壁挂、柱挂。
- 无螺丝结构，盒体采用翻盖式结构，使用方便。
- 具有在一端铰链的熔接盒，可以任意操作其中一盒而不会对其它纤盘造成影响，任意盒中光纤也可转接至其它盒中熔接，以加强灵活性。
- 即插即用，实现光纤用户业务的快速开通。

DESCRIPTION

- 1 port for uncut cable Φ 10-17.5mm, 2 branch ports for Φ 10-17.5mm cable, 16 cable outlet (applicable for 2x3mm soft cable or Φ 3-8mm round cable).
- Capacity: 24F per tray, could be installed with 4 trays, max capacity is 96F.
- Protection grade: IP68. Mechanical seal.
- Installation method: Wall-mounting, Pole-mounting.
- Could be installed with micro type splitters and 16pcs of SC adapters.
- Designed to be flipped over without screw. Easy to use.
- All the splice trays are hinged together at one side, which eases the operation of each tray. Optic fiber will not be damaged because of the mess of transitional tube.
- Also cables in one tray can be spliced in other trays.
- Plug and play, fast response for new subscribers.

订购指南 PURCHASE TIP

| 型号 Type | 产品尺寸 Size | 重量 Weight | 内箱尺寸 Inner carton size | 外箱尺寸 Outer carton size |
|------------|---------------|-----------|------------------------|------------------------|
| GPJ09-8205 | 380×245×130mm | 3.0-4.0kg | 395×255×165mm(1 pcs) | 540×410×350mm(4 pcs) |



铰链连接，可以任意操作其中一盒而不会对其它纤盘造成影响
All the trays are hinged at one side, independent operation to one tray would not affect others.



即插即用，实现光纤用户业务的快速开通
Plug and play, fast response for new subscribers.



不断光光缆口1个（适用直径10-17.5mm），分岐接口2个（适用直径10-17.5mm），出接口16个（适用2*3皮线缆，直径3-8mm圆缆）
1 port for Φ 10-17.5mm uncut cable, 2 branch ports for Φ 10-17.5mm cable, 16 cable outlet for 2*3 soft cable or Φ 3-8mm round cable.



GPJ09-8206

光缆接头盒

FIBER OPTIC SPLICER CLOSURE



铰链连接，可以任意操作其中一盒而不会对其它纤盘造成影响
All the splice trays are hinged together at one side



即插即用，实现光纤用户业务的快速开通
Plug and play, fast response for new subscribers.



接口：不断光光缆口1个（适用直径10-17.5mm），分岐接口2个（适用直径10-17.5mm），出接口24个（适用2*3皮线缆，直径3-8mm圆缆）

1 Port for uncut cable Φ 10-17.5mm, 2 branch ports for Φ 10-17.5mm cable, 24 ports for outlet cables (2x3mm soft cable or Φ 3-8mm round cable).



产品概述

- 接口：不断光光缆口1个（适用直径10-17.5mm），分岐接口2个（适用直径10-17.5mm），出接口24个（适用2*3皮线缆，直径3-8mm圆缆）
- 容量：单张纤盘24芯，可安装4张纤盘，最大容量可达96芯。
- 防护等级：IP68。机械密封：密封性能优良，可重复开启。
- 适配器：可安装SC适配器16个
- 光分路器：可安装微型光分路器
- 安装方式：壁挂、柱挂。
- 无螺丝结构，盒体采用翻盖式结构，使用方便。
- 具有在一端铰链的熔接盒，可以任意操作其中一盒而不会对其它纤盘造成影响，任意盒中光纤也可转接至其它盒中熔接，以加强灵活性。
- 即插即用，实现光纤用户业务的快速开通。

DESCRIPTION

- 1 Port for uncut cable Φ 10-17.5mm, 2 branch ports for Φ 10-17.5mm cable, 24 ports for outlet cables (2x3mm soft cable or Φ 3-8mm round cable).
- Capacity: 24F per tray, could be installed with 4 trays, max capacity 96F.
- Protection grade: IP68. Mechanical seal.
- Installation method: Wall-mounting, Pole-mounting.
- Could be installed with micro type splitters or 16pcs of SC adapters.
- Designed to be flipped over without screw.
- Compact size brings easy operation and complete function.
- All the splice trays are hinged together at one side, which eases the operation of each tray. Optic fiber will not be damaged because of the mess of transitional tube.
- Also cables in one tray can be spliced in other trays.
- Plug and play, fast response for new subscribers.

订购指南 PURCHASE TIP

| 型号 Type | 产品尺寸 Size | 重量 Weight | 内箱尺寸 Inner carton size | 外箱尺寸 Outer carton size |
|------------|---------------|-----------|------------------------|------------------------|
| GPJ09-8206 | 380×245×130mm | 3.5-4.5kg | 395×255×195mm(1 pcs) | 540×410×425mm(4 pcs) |

GPJ09-8207

光缆接头盒

FIBER OPTIC SPLICING CLOSURE

产品概述

- 接口：不断光接口1个（适用直径10-17.5mm），分歧接口1个（适用直径10-17.5mm），出接口16个（适用2*3皮线光缆，直径3-8mm圆缆）
- 容量：单张纤盘24芯，可安装4张纤盘，最大容量可达96芯。
- 防护等级：IP68。机械密封；密封性能优良，可重复开启。
- 适配器：可安装SC适配器16个
- 光分路器：可安装2个1:8微型光分路器
- 安装方式：壁挂、架空。
- 无缝丝结构，盒体采用翻页式结构，体积小功能全，使用方便。
- 即插即用，实现光纤用户业务的快速开通。
- 带纤盘保护罩，区分熔接区与配线区，互不干扰。
- 壁挂件安装件可拆卸，减少安装空间和包装空间，增加产品美观度。

订购指南 PURCHASE TIP

| 型号 Type | 产品尺寸 Size | 重量 Weight | 内箱尺寸 Inner carton size | 外箱尺寸 Outer carton size |
|------------|---------------|-----------|------------------------|------------------------|
| GPJ09-8207 | 370x210x124mm | 2.5-3.0kg | 390x230x145mm(1 pcs) | 490x410x330mm(4 pcs) |



即插即用，实现光纤用户业务的快速开通
Plug and play, fast response for new subscribers



带纤盘保护罩，区分熔接区与配线区，互不干扰
Equipped with splice tray protection cover to separate the splice zone and distribution zone.



壁挂件安装件可拆卸，减少安装空间和包装空间，增加产品美观
Detachable wall mounting kit, to save the space for installation and packing, more artistic.

DESCRIPTION

- 1 port for uncut cable Φ 10-17.5mm, 1 branch port for Φ 10 ~ 17.5mm cable, 16 ports for outlet cables (applicable for 2*3mm soft cable or Φ 3-8mm round cable).
- Capacity: 24F per tray, could be installed with 4 trays, max capacity 96F.
- Protection grade: IP68. Mechanical seal.
- Installation method: Wall-mounting, aerial.
- Designed to be flipped over without screw. Compact size brings easy operation and complete function.
- Plug and play, fast response for new subscribers.
- Equipped with splice tray protection cover to separate the splice zone and distribution zone.
- Detachable wall mounting kit, to save the space for installation and packing, more artistic.

GPJ09-8208

光缆接头盒

FIBER OPTIC SPLICING CLOSURE



不断光接口1个（适用直径10-17.5mm），分歧接口2个（10-17.5mm），室外适配器安装数量8个

1 Port for uncut cable Φ 10-17.5mm, 2 branch ports for Φ 10 ~ 17.5mm cable, 8 pcs of outdoor adapters.

较锁连接，可以任意操作其中一盘而不会对其它纤盘造成影响。最大容量可达144芯

All the trays are hinged at one side, independent operation to one tray would not affect others. Max capacity is 144F.



产品概述

- 接口：不断光接口1个（适用直径10-17.5mm），分歧接口2个（10-17.5mm），室外适配器安装数量8个
- 容量：单张纤盘12芯，可安装12张纤盘，最大容量可达144芯。
- 防护等级：IP68。机械密封；密封性能优良，可重复开启。
- 适配器：可安装室外适配器
- 光分路器：可安装微型光分路器
- 安装方式：壁挂、柱挂。
- 无缝丝结构，盒体采用翻页式结构，使用方便。
- 具有在一端较锁的熔接盘，可以任意操作其中一盘而不会对其它纤盘造成影响，任意盘中光纤也可转接至其它盘中熔接，以加强灵活性。

DESCRIPTION

- 1 Port for uncut cable Φ 10-17.5mm, 2 branch ports for Φ 10 ~ 17.5mm cable, 8 pcs of outdoor adapters.
- Capacity: 12F per tray, could be installed with 12 trays, max capacity is 144F.
- Protection grade: IP68. Mechanical seal.
- Installation method: Wall-mounting, pole-mounting.
- Could be installed with micro type splitters or outdoor adapters.
- Designed to be flipped over without screw. Easy to use.
- All the splice trays are hinged together at one side, which eases the operation of each tray. Optic fiber will not be damaged because of the mess of transitional tube. Also cables in one tray can be spliced in other trays.

订购指南 PURCHASE TIP

| 型号 Type | 产品尺寸 Size | 重量 Weight | 内箱尺寸 Inner carton size | 外箱尺寸 Outer carton size |
|------------|---------------|-----------|------------------------|------------------------|
| GPJ09-8208 | 380x245x130mm | 3.0-4.0kg | 395x255x165mm(1 pcs) | 540x410x350mm(4 pcs) |

FIBER OPTIC SPLICE CLOSURE

光缆接头盒系列



GPJ09-9403

光缆接头盒

FIBER OPTIC SPLICE CLOSURE



压扣转轴连接，不易脱落
Durable shaft type buckle



可移除式分光盒，可以安装2个分光器，
走线清晰，维护方便
Removable splitter box, could be installed
with 2 splitters, clear cable routing, easy to maintain.



产品概述

- 接口：2进2出（适用直径 D10mm~D16mm），
入户缆16个（适用皮线缆2mm*3mm）
- 容量：最大容48芯。
- 防护等级：IP55
- 适配器：可以安装18pcs SC适配器
- 分光器：带分光盒，可安装分光器
- 安装方式：架空
- 产品功能分区：透气式箱体，分上下两层，下层熔接，上层
分光配线。接头盒内部安装结构层次分明，不会影响施工操作。
- 压扣转轴连接，不易脱落。

DESCRIPTION

- 4 ports (2 inlet, 2 outlet) for Φ 10-16mm cable,
16 drop cable ports (applicable for 2*3mm soft cable).
- Max capacity: 48F.
- Protection grade: IP55.
- Installation method: Aerial.
- Could be installed with 18 pcs of adapters or splitters.
- Breathable structure, two-tier system, bottom tier for splicing,
top tier for splitting & distribution. Structured construction fixed by
simple buckle, easy for operation.
- Durable shaft type buckle.

订购指南 PURCHASE TIP

| 型号 Type | 产品尺寸 Size | 重量 Weight | 内箱尺寸 Inner carton size | 外箱尺寸 Outer carton size |
|------------|--------------|-----------|------------------------|------------------------|
| GPJ09-9403 | 668×160×70mm | 2-2.5kg | 690×165×95mm(1 pcs) | 705×350×415mm(8 pcs) |

Turn idea Into reality

GPJ09-9408

光缆接头盒

FIBER OPTIC SPLICE CLOSURE

产品概述

- 接口：2进2出（适用直径 D10mm-D16mm），入户缆16个（适用用皮线缆2mm*3mm）
- 容量：最大容量24芯。
- 防护等级：IP55
- 适配器：可安装SC适配器18个
- 光分路器：可安装微型光分路器
- 安装方式：架空
- 产品功能分区：分上下两层，下层熔接，上层分光配线。接头盒内部安装结构层次分明，不会影响施工操作。
- 搭扣美观，安全可靠

DESCRIPTION

- 4 ports (2 inlet, 2 outlet) for $\phi 10$ -16mm cable, 16 drop cable ports (applicable for 2*3mm soft cable).
- Max capacity: 24F.
- Protection grade: IP55.
- Installation method: Aerial.
- Could be installed with 18 pcs of SC adapters or micro type splitters.
- Two-tier system, bottom tier for splicing, top tier for splitting & distribution. Structured construction fixed by simple buckle, easy for operation.
- Reliable & spectacular buckle.

订购指南 PURCHASE TIP

| 型号 Type | 产品尺寸 Size | 重量 Weight | 内箱尺寸 Inner carton size | 外箱尺寸 Outer carton size |
|------------|--------------|-----------|------------------------|------------------------|
| GPJ09-9408 | 600×155×95mm | 3.0-3.5kg | 630×170×105mm(1 pcs) | 650×360×350mm(6 pcs) |



搭扣美观，安全可靠
Reliable &
spectacular buckle.



入户缆可下出线，
提高防护等级
Drop cable could be
down routing to improve the protection grade.



GPJ09-9413

光缆接头盒

FIBER OPTIC SPLICE CLOSURE



光分路器以根据实际安装环境需要，
左右互换
Splitter could be installed on
the right or left.



产品概述

- 接口：2进2出（适用直径 D10mm-D16mm），入户缆8个（适用皮线缆2mm*3mm）
- 容量：最大容24芯。
- 防护等级：IP55
- 光分插片盒：可以安装1:8光分插片盒
- 安装方式：架空、壁挂、柱挂
- 产品功能：复合式翻板一体化设计，实现熔接、光纤盘绕。安装光分插片盒，有效降低成本。

DESCRIPTION

- 4Ports (2 inlet, 2 outlet) for $\phi 10$ -16mm cable, 8 drop cable ports (2*3mm soft cable).
- Max capacity: 24F.
- Protection grade: IP55.
- Installation method: Aerial, wall-mounting, pole-mounting.
- Splitters: Could be installed with 1:8 module type splitter.
- Function: Multi use for the turnover plate, combine splicing, cable storage and installation of splitter.

订购指南 PURCHASE TIP

| 型号 Type | 产品尺寸 Size | 重量 Weight | 内箱尺寸 Inner carton size | 外箱尺寸 Outer carton size |
|------------|--------------|-----------|------------------------|------------------------|
| GPJ09-9413 | 310*193*87mm | 1.5~1.8kg | 355x215x105(1 pcs) | 450x370x350(6 pcs) |

GPJ09-9401

光缆接头盒
FIBER OPTIC SPLICE CLOSURE

产品概述

- 接口：不剪断光缆口1个（适用直径10~17.5mm），分歧接口2个（适用直径10~17.5mm）。
- 容量：单张纤盘12芯，可安装3张纤盘，最大容量可达36芯。
- 防护等级：IP68。机械密封；密封性能优良，可重复开启。
- 适配器：无
- 光分路器：无
- 安装方式：壁挂、柱挂、管道、地埋。
- 盒体采用胶紧式机械密封，结构新颖，外型小巧

DESCRIPTION

- 1 Port for uncut cable Φ 10-17.5mm, 2 branch ports for Φ 10 ~ 17.5mm cable
- Capacity: 12F per tray, could be installed with 3 trays, max capacity 36F.
- Protection grade: IP68. Mechanical seal.
- Installation method: Wall-mounting, pole-mounting, pipeline, direct burial.
- Distinguishable design, mechanical seal of spiral pattern, compact appearance.

订购指南 PURCHASE TIP

| 型号 Type | 产品尺寸 Size | 重量 Weight | 内箱尺寸 Inner carton size | 外箱尺寸 Outer carton size |
|------------|--------------|-----------|------------------------|------------------------|
| GPJ09-9401 | 295×220×90mm | 1.8~2.0kg | 320×235×110mm(1 pcs) | 495×345×620mm(10 pcs) |



旋紧式机械密封
Tighten mechanical seal



不剪断光缆口
Uncut cable port



GPJ09-6808

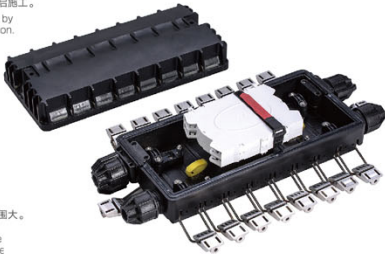
光缆接头盒
FIBER OPTIC SPLICE CLOSURE



盒体采用全搭扣设计，实现无螺丝安装，在保证良好密封的前提下方便重复开启施工。
Non-screws structure, box sealed by buckles around, easy to re-operation.



光缆采用螺母挤压密封，光缆适用范围大。
Cable sealed by nuts, meeting the sealing requests for different cable



产品概述

- 接头盒共有4个接口，二进二出。可以满足 Φ 10~16光缆的密封需要。
- 支持3张24芯熔接盘，单芯最大容量为72芯。
- 盒体采用机械式密封，密封性能良好，防护等级IP68。
- 安装方式：架空安装，管道安装。
- 操作简便，实用性强
- 盒体四周采用搭扣设计，实现无螺丝安装，在保证良好密封的前提下方便重复开启施工。
- 光缆采用螺母挤压密封，光缆适用范围大并能满足密封要求。
- 可分开螺母设计，满足不剪断光缆的安装。

DESCRIPTION

- 4 cable ports in total (2 inlet and 2 outlet). Applicable for Φ 10 ~ 16mm cable.
- Could be installed with 3x24F trays, with max capacity 72F for single core fiber.
- Mechanical seal. Protection grade: IP68.
- Installation method: Aerial, pipe line.
- Easy in operation, very practical.
- Non-screws structure, box sealed by buckles around, easy to re-operation.
- Cables are sealed by nuts to meet test requirements of cable torque, stretching, pressure, bending.
- The right cable nut could be divided into two parts, applicable for uncut cable.

订购指南 PURCHASE TIP

| 型号 Type | 产品尺寸 Size | 重量 Weight | 单包装尺寸 Inner carton size | 外包装尺寸 Outer Carton Size |
|------------|---------------|-----------|-------------------------|-------------------------|
| GPJ09-6808 | 490×200×120mm | 3.5-4.0kg | 510×220×150mm(1 pcs) | 530×460×480mm(6 pcs) |

GPJ09-6812

光缆接头盒

FIBER OPTIC SPLICER CLOSURE

产品概述

- 接头盒共有4个端口,二进二出。可以满足 $\phi 10 \sim 18$ 光缆的密封需要。
- 支持3芯24芯熔接盘,单芯最大容量为72芯。
- 盒体采用机械式密封,密封性能良好。防护等级IP68。
- 安装方式:架空安装,管道安装。
- 光缆固定板和钢芯加强芯固定装置采用一体设计,减少空间,增大光纤容量。
- 光缆采用螺母挤压密封,光缆适用范围大并能满足密封要求。

DESCRIPTION

- 4 cable ports in total (2 inlet and 2 outlet). Applicable for $\phi 10 \sim 18$ mm cable.
- Could be installed with 3x24F trays, with max capacity 72F for single core fiber.
- Mechanical seal. Protection grade: IP68.
- Installation method: Aerial, pipe line.
- Combine the cable fixture plate and strength member fixture device to save more space for cable storage.
- Cable sealed by nuts, meeting the sealing requests for different cables.

订购指南 PURCHASE TIP

| 型号 Type | 产品尺寸 Size | 重量 Weight | 单包装尺寸 Inner carton size | 外包装尺寸 Outer carton size |
|------------|---------------|-----------|-------------------------|-------------------------|
| GPJ09-6812 | 474×200×105mm | 2.3~2.8kg | 500×220×125mm(1 pcs) | 520×465×425mm(6 pcs) |



光缆固定板和钢芯加强芯固定装置采用一体设计,减少空间,增大光纤容量

Combine the cable fixture plate and strength member fixture device to save more space for cable storage.



光缆采用螺母挤压密封,光缆适用范围大。

Cable sealed by nuts, meeting the sealing requests for different cables.



GPJ09-6805/GPJ09-6805-B

光缆接头盒

FIBER OPTIC SPLICER CLOSURE



采用非硫化自粘密封胶条密封,可以通过各种环境性能测试,如高低温20次循环、各类化学腐蚀性试验。

Non-vulcanized self-adhesive sealing strip.



共8个端口,端口数量多,满足多分路要求。

Bores to meet different branch needs.



可安放纤盘数量多,单芯最大容量为144芯

Could be installed with 6 trays, with max capacity 144F for single core fiber.



可互换 Interchangeable

产品概述

- 接头盒共有8个端口,四进四出。可以满足 $\phi 10 \sim 18$ 光缆的密封需要。
- 支持6芯24芯熔接盘,单芯最大容量为144芯。
- 盒体采用机械式密封,密封性能良好。防护等级IP68。
- 安装方式:架空安装,管道安装。
- 本产品可以通过各种环境性能测试,如高低温20次循环、各类化学腐蚀性试验。
- 光缆接头盒紧固螺钉和螺钉垫块采用304不锈钢,以提高产品的耐腐蚀性能。
- 采用非硫化自粘密封胶条可以满足 $\phi 10 \sim 18$ 光缆的密封需要,再封装性能特别优良。
- 足够的空间满足不断新光纤盘放,安装更加方便。

DESCRIPTION

- 8 cable ports in total (4 inlet and 4 outlet). Applicable for $\phi 10 \sim 18$ mm cable.
- Could be installed with 6x24F trays, with max capacity 144F for single core fiber.
- Mechanical seal. Protection grade: IP68.
- Installation method: Aerial, pipe line.
- It passes various environmental performance tests, including 20 cycles of high & low temperature test, all kinds of chemical corrosion tests.
- Tighten screws and gaskets are all made of 304 stainless steel to improve the corrosion resistance.
- Enough space for the storage of uncut cable, easy in installation.

订购指南 PURCHASE TIP

| 型号 Type | 产品尺寸 Size | 重量 Weight | 单包装尺寸 Inner carton size | 外包装尺寸 Outer carton size |
|--------------|---------------|-----------|-------------------------|-------------------------|
| GPJ09-6805 | 555×217×107mm | 4.0~4.5kg | 620×235×125mm(1 pcs) | 640×490×425mm(6 pcs) |
| GPJ09-6805-B | 555×217×151mm | 4.0~4.5kg | 620×235×165mm(1 pcs) | 640×490×550mm(6 pcs) |

GPJ09-6806/GPJ09-6806-B

光缆接头盒

FIBER OPTIC SPLICE CLOSURE

产品概述

- 接头盒共有4个端口,二进二出。
可以满足 $\phi 10 \sim 20$ 光缆的密封需要。
 - 支持6张24芯熔接盘,单芯最大容量为144芯,12芯带状最大容量为432芯。
 - 盒体采用机械式密封,密封性能良好。防护等级:IP68。
 - 安装方式:架空安装,管道安装。
 - 本产品可以通过各种环境性能测试,如高低温20次循环,各类化学腐蚀试验。
 - 光缆接头盒紧固螺钉和螺钉垫块采用304不锈钢,以提高产品的耐腐蚀性能。
- 足够的空间满足不剪断光纤盘状,安装更加方便。

DESCRIPTION

- 4 cable ports in total (2 inlet and 2 outlet).
Applicable for $\phi 10 \sim 20$ mm cable.
- Could be installed with 6x24F trays, with max capacity 144F for single core fiber, 432F for 12 cores ribbon fiber.
- Mechanical seal. Protection grade: IP68.
- Installation method: Aerial, pipe line.
- It passes various environmental performance tests, including 20 cycles of high & low temperature test, all kinds of chemical corrosion tests.
- Tighten screws and gaskets all made of 304 stainless steel to improve the corrosion performance.
- Enough space for the storage of uncut cable, easy in installation.

订购指南 PURCHASE TIP

| 型号 Type | 产品尺寸 Size | 重量 Weight | 单包装尺寸 Inner carton size | 外包装尺寸 Outer Carton Size |
|--------------|---------------|-----------|-------------------------|-------------------------|
| GPJ09-6806 | 474×201×107mm | 3.0-3.5kg | 540×220×125mm(1 pcs) | 560×465×425mm(6 pcs) |
| GPJ09-6806-B | 474×201×150mm | 3.5-4.0kg | 540×220×165mm(1 pcs) | 560×465×550mm(6 pcs) |

GPJ09-6807

光缆接头盒

FIBER OPTIC SPLICE CLOSURE



光缆固定采用内外双通鼻式紧固,不但保证光缆紧固且位于密封条中间,而且确保光缆的拉力、拉伸、压力、弯曲符合检测要求
Double press buckle structure



整体小巧灵活,结构简洁,操作方便
Small in size simple in structure easy in operation

采用硫化密封条密封,再封装性能优良
Vulcanized sealing strip, good re-sealing performance



产品概述

- 接头盒共有4个端口,二进二出。可以满足 $\phi 10 \sim 20$ 光缆的密封需要。
- 支持4张24芯熔接盘,单芯最大容量为96芯。
- 盒体采用机械式密封,密封性能良好。防护等级:IP68。
- 安装方式:架空安装,管道安装。
- 整体小巧灵活,结构简洁,操作方便。
- 光缆固定采用内外双通鼻浮式紧固,不但保证光缆紧固且自动处于密封条中间,而且确保光缆的拉力、拉伸、压力、弯曲符合检测要求。
- 光缆接头盒紧固螺钉和螺钉垫块采用304不锈钢,以提高产品的耐腐蚀性能。
- 采用硫化密封条可以满足 $\phi 10 \sim 20$ 光缆的密封需要,再封装性能特别优良。

DESCRIPTION

- 4 cable ports in total (2 inlet and 2 outlet).
Applicable for $\phi 10 \sim 20$ mm cable.
- Could be installed with 4x24F trays, with max capacity 96F for single core fiber.
- Mechanical seal. Protection grade: IP68.
- Installation method: Aerial, pipe line.
- Small in size, simple in structure, easy in operation.
- Double press buckle fix the cable to meet the test requirements of cable torque, stretching, pressure, bending.
- Vulcanized sealing strip makes the ports applicable for $\phi 10 \sim 20$ cable, good re-sealing performance.

订购指南 PURCHASE TIP

| 型号 Type | 产品尺寸 Size | 重量 Weight | 单包装尺寸 Inner carton size | 外包装尺寸 Outer carton size |
|------------|---------------|-----------|-------------------------|-------------------------|
| GPJ09-6807 | 420×201×128mm | 2.2-2.7kg | 440×220×150mm(1 pcs) | 460×460×480mm(6 pcs) |



采用非硫化自粘密封条密封,可以通过各种环境性能测试,如高低温20次循环,各类化学腐蚀试验
Non-vulcanized self-adhesive sealing strip.



可安放纤盘数量多,单芯最大容量为144芯,带状最大容量为12芯带432芯
Could be installed with 6trays, with max capacity 144F for single core fiber, 432F for 12 cores ribbon fiber.



GPJ09-6208

光缆接头盒

FIBER OPTIC SPLICE CLOSURE

产品概述

- 接头盒共有8个端口，四进四出。其中6个端口可以满足 $\phi 6 \sim 8$ mm的光缆密封需要，2个端口可以满足 $\phi 6 \sim 12$ mm的需要。
- 支持2张24芯熔接盘，单芯最大容量为48芯。
- 盒体采用机械式密封，密封性能良好。防护等级:IP68。
- 安装方式：架空安装，管道安装。
- 该产品采用硫化橡胶+非硫化自粘橡胶密封的组合，实用性强。
- 光缆固定采用内通压扣紧固，可以确保光缆的抗拉伸、压力、弯曲符合检测要求。
- 整体小巧灵活，结构简洁，操作方便。

DESCRIPTION

- 8 cable ports in total (4 inlet and 4 outlet), 6 ports for $\phi 6 \sim 8$ mm cable, 2 ports for $\phi 6 \sim 12$ mm cable.
- Could be installed with 2x24F trays, with max capacity 48F for single core fiber.
- Mechanical seal. Protection grade: IP68.
- Installation method: Aerial, pipe line.
- Combination use of vulcanized rubber and non-vulcanized rubber for sealing, very practical.
- Inner suspension fixation insures cable to meet the test requirements of cable torque, stretching, pressure, bending.
- Small in size, simple in structure, easy in operation.

订购指南 PURCHASE TIP

| 型号 Type | 产品尺寸 Size | 重量 Weight | 单包装尺寸 Inner carton size | 外包装尺寸 Outer Carton Size |
|------------|--------------|-----------|-------------------------|-------------------------|
| GPJ09-6208 | 280×180×85mm | 1.8-2.2kg | 300×230×110mm(1 pcs) | 485×325×465mm(8 pcs) |



共8个端口，端口数量多，满足多分线要求
8 ports to meet different branch needs.



光缆固定采用内通压扣紧固，可以确保光缆的抗拉伸、压力、弯曲符合检测要求
Cable fixing structure.



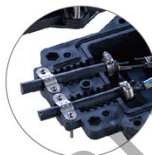
该产品采用硫化橡胶+非硫化自粘橡胶密封的组合，实用性强
Combination use of vulcanized rubber and non-vulcanized rubber for sealing, very practical.



GPJ09-6407

光缆接头盒

FIBER OPTIC SPLICE CLOSURE



光缆固定采用内外双道压扣紧固，可以确保光缆的抗拉伸、压力、弯曲符合检测要求
Double press buckle fix the cable to meet the test requirements of cable torque, stretching, pressure, bending.



产品概述

- 接头盒共有4个端口，二进二出。可以满足 $\phi 10 \sim 17.5$ mm的光缆的密封需要。
- 支持4张24芯熔接盘，单芯最大容量为96芯。
- 盒体采用机械式密封，密封性能良好。防护等级:IP68。
- 安装方式：架空安装，管道安装。
- 操作简便，实用性强。
- 光缆固定采用内外双道压扣紧固，可以确保光缆的抗拉伸、压力、弯曲符合检测要求。

DESCRIPTION

- 4 cable ports in total (2 inlet and 2 outlet), Applicable for $\phi 10 \sim 17.5$ mm cable.
- Could be installed with 4x24F trays, with max capacity 96F for single core fiber.
- Mechanical seal. Protection grade: IP68.
- Installation method: Aerial, pipe line.
- Easy in operation, very practical.
- Double press buckle fix the cable to meet the test requirements of cable torque, stretching, pressure, bending.

订购指南 PURCHASE TIP

| 型号 Type | 产品尺寸 Size | 重量 Weight | 单包装尺寸 Inner carton size | 外包装尺寸 Outer carton size |
|------------|---------------|-----------|-------------------------|-------------------------|
| GPJ09-6407 | 455×180×120mm | 2.2-2.8kg | 465×180×130mm(1 pcs) | 485×380×420mm(6 pcs) |

GPJ09-6408

光缆接头盒
FIBER OPTIC SPLICE CLOSURE

产品概述

- 接头盒共有8个端口,四进四出。其中6个端口可以满足φ8~13 光缆的密封需要, 2个端口可以满足φ10~17.5光缆的需要。
- 支持6张24芯熔接盘, 单芯最大容量为144芯, 12芯带状最大容量为288芯。
- 盒体采用机械式密封, 密封性能良好。防护等级IP68。
- 安装方式: 架空安装, 管道安装。
- 操作简便, 实用性强
- 光缆固定采用内外双道压扣紧固, 可以确保光缆的扭力、拉伸、压力、弯曲符合检测要求。

DESCRIPTION

- 8 cable ports in total (4 inlet and 4 outlet). 6 ports for φ8~13mm cable. 2 ports for φ10~17.5mm cable.
- Could be installed with 6x24F trays, with max capacity 144F for single core fiber, and 288F for 12 cores ribbon cable.
- Mechanical seal. Protection grade: IP68.
- Installation method: Aerial, pipe line.
- Easy in operation, very practical.
- Double press buckle fix the cable to meet the test requirements of cable torque, stretching, pressure, bending.

订购指南 PURCHASE TIP

| 型号 Type | 产品尺寸 Size | 重量 Weight | 单包装尺寸 Inner carton size | 外包装尺寸 Outer Carton Size |
|------------|---------------|-----------|-------------------------|-------------------------|
| GPJ09-6408 | 455x201x120mm | 2.5-3.0kg | 465x205x130mm(1 pcs) | 485x425x420mm(6 pcs) |



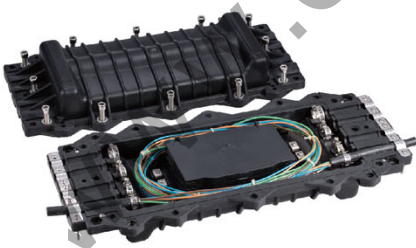
光缆固定采用内外双道压扣紧固, 可以确保光缆的扭力、拉伸、压力、弯曲符合检测要求

Double press buckle fix the cable to meet the test requirements of cable torque, stretching, pressure, bending.



共8个端口, 端口数量多, 满足多分枝要求

8ports to meet different branch needs.



FIBER OPTIC
DISTRIBUTION BOX

光缆分纤箱系列



Turn idea Into reality

GF-KSW-8A

光缆分纤箱
FIBER OPTIC DISTRIBUTION BOX



“滑块式”结构，可盒体密封好，
盒体开合简单方便
“Slider” structure for box sealing



“插拔式”加喉箍紧固结构，
可使配线光缆皮缆更加紧密密封
“Plug-in” type sealing plugs
for drop cable ports.



产品概述

- 满足2根Φ10~15光缆终端的光分与配线，
满足9根8字形皮缆的保护性接续；
- 最大容量：12芯；
- 防护等级：IP55。
- 适配器/光分：可安装插片式光分路器（1：4、1：8）；
- 安装方式：抱杆、挂墙式
- 内有一套可靠的光缆、皮线槽固定装置；
- 盒体密封采用“滑块式”结构，外加可选择性螺丝固定，
盒体开合简单方便
- 采用光分插片式结构，操作方便，安装简单。

订购指南 PURCHASE TIP

| 型号 Type | 产品尺寸 Size | 重量 Weight | 内箱尺寸 Inner carton size | 外箱尺寸 Outer carton size |
|-----------|------------------|-----------|------------------------|------------------------|
| GF-KSW-8A | 239.2x201.5x77mm | 2.0-2.5kg | 280x230x130mm(1 pcs) | 500x310x440mm(6 pcs) |

GF-KSW-16A

光缆分纤箱
FIBER OPTIC DISTRIBUTION BOX

产品概述

- 满足3根Φ10~15光缆终端的光分与配线，
满足18根8字形皮缆的保护性接续；
- 最大容量：24芯；
- 防护等级：IP55。
- 适配器/光分：可安装插片式光分路器（1：4、1：8、1：16）；
- 安装方式：抱杆、挂墙式
- 内有一套可靠的光缆、皮线槽固定装置；
光分插片箱采用枝链式结构，可以方便快速的插拔光分插片盒；
盒体密封采用“滑块式”结构，外加可选择性螺丝固定，
盒体开合简单方便。
- 内有光分适配器保护装置、插片式光分路器固定装置；
- 采用光分插片式结构，操作方便，安装简单。

订购指南 PURCHASE TIP

| 型号 Type | 产品尺寸 Size | 重量 Weight | 内箱尺寸 Inner carton size | 外箱尺寸 Outer carton size |
|------------|-----------------|-----------|------------------------|------------------------|
| GF-KSW-16A | 326x277.5x124mm | 3.0-3.5kg | 385x300x165mm(1 pcs) | 420x650x550mm(6 pcs) |

DESCRIPTION

- Applicable for 3pcs of Φ10-15 distribution cable and
18pcs of 8' figure soft cable.
- Max capacity: 24F.
- Protection grade: IP55.
- Adapters/splitter: Module type splitter (1:4, 1:8, 1:16).
- Installation method: Pole-mounting, wall-mounting.
- Equipped with a set of reliable fiber cable & soft cable fixing kit.
- Hinge structure for the module type splitter, easy to plug and pull.
- “Slider” structure for box sealing, with fixing screw(for option),
easy to open and close.
- Equipped with splice protector, splitter fixing kit.



“滑块式”结构，可盒体密封好，
盒体开合简单方便
“Slider” structure for box sealing.



“铰链式”结构可以方便快速的插拔
光分插片盒
Hinge structure for module type
splitter.



GF-KSW-24A/B

光缆分纤箱
FIBER OPTIC DISTRIBUTION BOX



“卡扣式”可使箱体更加紧密密封，又可保护锁。
Buckle type structure could seal the box and protect the lock.



复合式翻板可安装适配型或安装插片式分光插片型
Compound type turnover plate could be installed with module type splitter or adapters



壁挂和柱挂合式，使安装非常方便
Combination of wall-mounting kit and pole-mounting kit, easier to install



产品概述

- 满足Φ10~15光缆终端的光分与配线，满足8字形或Φ3皮缆的保护性接续；
- 最大容量：24芯；
- 防护等级：IP55；
- 适配器/分光：可安装插片式光分路器（1:4、1:8、1:16），可安装24芯的FC或SC的适配器；
- 安装方式：抱杆、挂墙式
- 内有一套可靠的光缆、皮线固定装置；
- 搭扣型式既可以紧固密封箱体，又可保护锁。
- 内有光纤熔接器保护装置、插片式光分路器固定装置；
- 壁挂和柱挂合式，使安装非常方便；
- GF-KSW-24A采用适配器式，GF-KSW-24B采用光分插片式。

DESCRIPTION

- Applicable for Φ10-15 distribution cable and 8 figure or Φ3 soft cable.
- Max capacity: 24F.
- Protection grade: IP55.
- Adapters/splitter: Module type splitter (1:4, 1:8, 1:16), and 24pcs of FC or SC adapters.
- Installation method: Pole-mounting, wall-mounting.
- Equipped with a set of reliable fiber cable & soft cable fixing kit.
- Buckle type structure could seal the box and protect the lock.
- Equipped with splice protector, splitter fixing kit.
- Combination of wall-mounting kit and pole-mounting kit, easier to install.
- GF-KSW-24A is for adapters. GF-KSW-24B is for module type splitter.

订购指南 PURCHASE TIP

| 产品尺寸 Size | 重量 Weight | 内箱尺寸 Inner carton size | 外箱尺寸 Outer carton size |
|---------------|-----------|------------------------|------------------------|
| 374x264x112mm | 2.1-3kg | 395x275x145mm(1 pcs) | 575x415x490mm(6pcs) |

GF-KSW-48A/B

光缆分纤箱
FIBER OPTIC DISTRIBUTION BOX

产品概述

- 满足Φ10~15光缆终端的光分与配线，满足8字形或Φ3皮缆的保护性接续；
- 最大容量：48芯；
- 防护等级：IP55。
- 适配器/分光：可安装插片式光分路器（1:4、1:8、1:16、1:32），可安装48芯的FC或SC的适配器；
- 安装方式：抱杆、挂墙式
- 内有一套可靠的光缆、皮线固定装置；
- 搭扣型式既可以紧固密封箱体，又可保护锁。
- 内有光纤熔接器保护装置、插片式光分路器固定装置；
- 柱挂和壁挂合式，使安装非常方便；
- GF-KSW-48A采用适配器式，GF-KSW-48B采用光分插片式

订购指南 PURCHASE TIP

| 型号 Type | 产品尺寸 Size | 重量 Weight | 内箱尺寸 Inner carton size | 外箱尺寸 Outer carton size |
|--------------|---------------|-----------|------------------------|------------------------|
| GF-KSW-48A/B | 504x374x134mm | 4.8-5.2kg | 550x405x160mm(1 pcs) | 565x420x540mm(3 pcs) |



“卡扣式”可使箱体更加紧密密封，又可保护锁。
Buckle type structure.



复合式翻板可安装适配型或安装插片式分光插片型
Compound type turnover plate could be installed with module type splitter or adapters.



壁挂和柱挂合式，使安装非常方便
Combination of wall-mounting and pole-mounting kit.



DESCRIPTION

- Applicable for Φ10-15 distribution cable and soft cable.
- Max capacity: 48F.
- Protection grade: IP55.
- Adapters/splitter: Module type splitter (1:4, 1:8, 1:16, 1:32), and FC or SC adapters.
- Installation method: Pole-mounting, wall-mounting.
- Equipped with a set of reliable fiber cable & soft cable fixing kit.
- Buckle type structure could seal the box and protect the lock.
- Equipped with splice protector, splitter fixing kit.
- Combination of wall-mounting and pole-mounting kit, which makes it easier for installation.

GXF6-15N6S

光缆分纤箱

FIBER OPTIC DISTRIBUTION BOX



“滑块式”结构，可是箱体密封好，
箱体开合简单方便
“Slider” structure for box sealing.



右边“插拔式”加锁箱紧固结构，可使
配线光缆更加紧固密封，左边的皮线紧
固结构加胶条，可使皮线更加紧固
“Plug-in” type structure for
distribution cable fixing.



“推动式”结构，可以方便快捷的安装
和拆卸箱体
Push type structure for mounting
plate, easy to install and disassemble



产品概述

- 满足2根Φ10~15光缆终端的光分与配线，
满足16根Φ3皮线的保护性接续；
- 最大容量：16芯。
- 防护等级：IP55。
- 适配器/光分路器：可安装PLC分光路器1:8两只，PLC分光路器
1:16一只，适用于SC适配器、快速连接器的安装与使用；
- 安装方式：室外壁挂、抱杆安装。
- 光缆进出口采用开放式结构，皮线采用单独出线方式，
内部布线简明了，安装特别方便；
- 箱体密封采用“滑块式”结构，外加可选择性螺丝固定，
箱体开合简单方便；
- 箱体安装（柱挂和壁挂）采用“推动式”结构，柱挂安装支架加锁紧，
壁挂安装支架加螺栓；
- 翻板上的盖板可以很好的保护光分和纤；
- 适用于不断断光缆安装；

DESCRIPTION

- Applicable for 2pcs of Φ10-15 distribution cable and 16pcs of soft cable.
- Max capacity: 16F.
- Protection grade: IP55.
- Adapters/splitter: Applicable for PLC splitter (2X1:8 or 1X1:16),
and SC adapters or fast connector.
- Installation method: Outdoor pole-mounting, wall-mounting.
- Open structure for inlet and outlet cable, separate ports for soft cable,
clear internal wiring, easy in installation.
- “Slider” structure for box sealing, with fixing screw (for option),
easy to open and close.
- The splice tray cover could protect the cable & splitter.
- Applicable for uncut cable.

订购指南 PURCHASE TIP

| 型号 Type | 产品尺寸 Size | 重量 Weight | 内箱尺寸 Inner carton size | 外箱尺寸 Outer carton size |
|------------|---------------|-----------|------------------------|------------------------|
| GXF6-15N6S | 295x250x100mm | 2.0-2.4kg | 315x265x145mm(1 pcs) | 550x330x475mm(6pcs) |

GXF6-15N27A/B

光缆分纤箱

FIBER OPTIC DISTRIBUTION BOX



弹簧结构可使箱体开合非常方便
Spring lock



复合式翻板可安装适配器或
安装插片式光分插片器
Compound type turnover plate
could be installed with module
type splitter or adapters.



产品概述

- 满足Φ10~15光缆终端的光分与配线，
满足8字形或Φ3皮线的保护性接续。
- 最大容量：24芯；
- 防护等级：IP55；
- 适配器/光分插片：可安装24芯FC或SC适配器，
盘纤及1：8PLC光分路器插片盒两只；
- 安装方式：室外壁挂式；
- FTTH产品，无源光分、配线专用配线箱；
- 锁紧结构使箱体开合非常方便；
- 箱体采用SMC材料，抗UV性能强。
- GXF6-15N27A采用适配器式，GXF6-15N27B采用光分插片式。

订购指南 PURCHASE TIP

| 型号 Type | 产品尺寸 Size | 重量 Weight | 内箱尺寸 Inner carton size |
|---------------|---------------|-----------|------------------------|
| GXF6-15N27A/B | 380x360x120mm | 4.0-4.5kg | 430x370x150mm(1 pcs) |

GXF6-15N39-A/B

光缆分纤箱
FIBER OPTIC DISTRIBUTION BOX

产品概述

- 端口：不剪断光缆口1个（适用直径10-17.5mm），分线端口2个（适用直径10-17.5mm）。
- 容量：单张纤盘6芯，可安装8张纤盘，最大容量可达48芯。
- 防护等级：IP5X
- 适配器：可以安装48pcs适配器
- 光分路器：可安装光分路器
- 安装方式：室内壁挂
- 箱体由左右两个区域构成，每个区域都有一个单独的门。左右两侧区域结合处有一个适配器面板，左侧区域实现光纤的引入、熔接等功能。右侧区域为公共区域。即插即用，实现光纤用户业务的快速开通。
- 可实现多个分纤箱合并使用

DESCRIPTION

- 1 port for uncut cable Φ 10-17.5mm.
- Capacity: 6F per tray, could be installed with 8 trays, max capacity 48F.
- Protection grade: IP5X.
- Installation method: Indoor wall-mounting.
- Could be installed with splitters or 32pcs of adapters.
- An adapter panel applicable for 32pcs of adapters between the left and right regions. The left region is for inlet and splicing of optical fiber and the right region is public area.
- Applicable for combination use of multi distribution boxes.

订购指南 PURCHASE TIP

| 重量 Weight | 产品尺寸 Size | 内箱尺寸 Inner carton size | 外箱尺寸 Outer carton size |
|-----------|----------------------------|------------------------------------------|------------------------|
| 3.0-4.0kg | 450x180x165 320x150x105 | 480x190x185(1 pcs) 360x160x120(1 pcs) | |



可实现多个分纤箱合并使用
Applicable for combination use of multi distribution boxes.



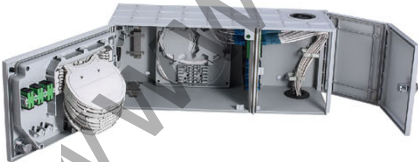
主干光缆熔配区域
Feeder cable splice zone.



不剪断余缆区域+光分装区域
Uncut cable storage zone+ splitter.



用户端配线区域
Drop cable zone.



GP62FN-3/-4/-11/-12

光缆终端盒
FIBER OPTIC TERMINAL BOX

产品概述

- 盒体盖与底采用“自卡式”设计或转轴式设计，美观又简便，适用于室内布线安装。
- 防护等级：IP52。
- 安装方式：壁挂安装。
- 可安装SC适配器，可利用冷接子与室内皮线进行连接。
- FTTH产品，室内配线专用盒终端。
- 与标准A86接线盒通用，特别适用于室内布线与现场快速安装。

DESCRIPTION

- Protection grade: IP52.
- Installation method: Indoor wall mounting.
- Applicable for 2pcs of SC adapters, connect indoor soft cable by machine connector.
- Special for FTTH indoor termination.
- Universal box as standard A86, especially applicable for indoor wiring and fast field installation.

订购指南 PURCHASE TIP

| 型号 Type | 产品尺寸 Size | 重量 Weight | 单包装尺寸 Inner carton size | 外包装尺寸 Outer Carton Size |
|-----------------|------------|------------|-------------------------|-------------------------|
| GP62FN-3/-4/-12 | 86x28x86mm | 0.06-0.1kg | — | 480×390×180mm(100 pcs) |
| GP62FN-11 | 86x28x86mm | 0.06-0.1kg | 90×30×90mm | 480×390×180mm(100 pcs) |



采用卡扣或转轴设计，美观简单
Clip-on type or shaft type structure



GP62DW-10

光缆终端盒
FIBER OPTIC TERMINAL BOX



支持弯接光缆，使用更方便，
运用更广泛
Applicable for uncured cable.



产品采用纤盘与翻板的结合，
实用性更强
The box is more practical by combining
splice tray and turnover plate.



产品概述

- 终端盒满足8根8字形纤盘和两根Φ12以下光缆的安装。
- 支持1张8芯熔接盘，单芯最大容量为8芯。
- 盒体采用机械式密封，密封性能良好。防护等级IP55。
- 安装方式：壁挂、抱杆安装。
- 可安装8个SC/APC适配器和1个1：8微型光分路器。
- 该产品采用纤盘与翻板的结合，实用性更强。
- 支持弯接光缆，使用更方便，运用更广泛。
- 整体小巧灵活，结构简洁，操作简便。

DESCRIPTION

- Applicable for 8pcs of soft cable & 2pcs of Φ12 cable.
- Max capacity 8F for the splice tray.
- Mechanical seal, good sealing performance. Protection grade: IP55.
- Installation method: Wall mounting, pole mounting.
- Applicable for 8pcs of SC/APC adapters and 1x1:8 micro type splitter.
- Applicable for uncured cable more practical.

订购指南 PURCHASE TIP

| 型号 Type | 产品尺寸 Size | 重量 Weight | 单包装尺寸 Inner carton size | 外包装尺寸 Outer carton size |
|-----------|--------------|-----------|-------------------------|-------------------------|
| GP62DW-10 | 210×180×50mm | 1.0-1.5kg | 210×80×225mm | 470×440×330mm(20 pcs) |

GP62DW-2

光缆终端盒
FIBER OPTIC TERMINAL BOX

产品概述

- 满足Φ12以下光缆终端的光分配线，及8字形Φ3皮线槽的保护性接续。
- 支持1张1芯熔接盘，单芯最大容量为4芯。
- 盒体采用翻页式结构，具有防盗功能。体积小功能全，使用方便。防护等级IP55。
- 安装方式：壁挂安装。
- 可安装1:2或1:4微型光分路器，同时可安装SC或LC双芯适配器，LC最大芯数为4芯，SC最大芯数为2芯。
- FTTH产品，配线专用终端盒，获国家多项新型实用专利。

订购指南 PURCHASE TIP

| 型号 Type | 产品尺寸 Size | 重量 Weight | 单包装尺寸 Inner carton size | 外包装尺寸 Outer Carton Size |
|----------|--------------|-----------|-------------------------|-------------------------|
| GP62DW-2 | 208×153×52mm | 0.5-0.6kg | 156×55×220mm | 460×335×590mm(40 pcs) |

DESCRIPTION

- Applicable for Φ12 cable termination and "8" figure or Φ3 soft cable.
- Max capacity is 4F for the splice tray.
- Flip structure, anti-theft by key. Small size with full function, easy to use. Protection grade: IP55.
- Installation method: Outdoor wall-mounting.
- Applicable for 1:2 SC or 1:4 LC micro type splitter, and SC simplex or LC duplex adapters.
- Special for FTTH indoor termination, obtains many national patents.



可安装1:2或1:4微型光分路器
Applicable for 1:2 or 1:4
micro type splitter.



盒体采用翻页式结构，具有防盗功能
体积小功能全，使用方便
Flip structure, anti-theft by key.
Small size with full function,
easy to use.



GP62DW-3

光缆终端盒
FIBER OPTIC TERMINAL BOX



可安装1:8或1:16微型光分器
Applicable for 1:8 or 1:16 micro type splitter,



盒体采用翻盖式结构，具有防盗功能
体积小功能全，使用方便
Flip structure, anti-theft by key. Small size with full function, easy to use.



产品概述

- 满足Φ12以下光缆终端的光分配线，及8字形或Φ3皮线光缆的保护性接续。
- 支持1板1芯熔接盘，单芯最大容量为24芯。
- 盒体采用翻盖式结构，具有防盗功能，体积小功能全，使用方便。防护等级IP55。
- 安装方式：壁挂安装。
- 可安装1:8或1:16微型光分器，同时可安装SC双芯或LC四芯适配器，LC最大配线为24芯，SC最大配线为12。
- FTTH产品，配线专用终端盒，获国家多项新型实用专利。

DESCRIPTION

- Applicable for Φ12 cable termination and "B" figure or Φ3 soft cable.
- Max capacity is 24F for the splice tray.
- Flip structure, anti-theft by key. Small size with full function, easy to use. Protection grade: IP55.
- Installation method: Wall mounting.
- Applicable for 1:8 SC or 1:16 LC micro type splitter, and SC duplex or LC four cores adapters.
- Special for FTTH indoor termination, obtains many national patents.

订购指南 PURCHASE TIP

| 型号 Type | 产品尺寸 Size | 重量 Weight | 单包装尺寸 Inner carton size | 外包装尺寸 Outer carton size |
|----------|--------------|-----------|-------------------------|-------------------------|
| GP62DW-3 | 259×186×61mm | 0.9-1.0kg | 196×65×275mm | 570×415×355mm(20 pcs) |

FIBER OPTIC SPLICE CABINET & SHEET METAL BOX

光交及钣金箱系列

Turn idea Into reality



GXF6-15N18A/B

光缆分纤箱

FIBER OPTIC DISTRIBUTION BOX

产品概述

- 箱体右侧进线4个端口，左侧出线2个端口，满足 $\phi 10-22\text{mm}$ 的光缆。
- 最大容量48芯。
- 室外或楼道壁挂安装或挂柱安装，防护等级IP55。
- 采用优质的冷轧钢板，表面喷涂处理。
- 单开门，翻转结构。
- 最大可安装插片式1:4光分路器4只、1:8光分路器4只、1:16光分路器2只、1:32光分路器1只
- 可安装FC、SC、ST适配器。
- 可靠的光缆固定、开剥保护、接地。
- 进线孔充足相对独立，分支光缆可为皮缆光缆。

DESCRIPTION

- 4 inlet ports on the right, 2 outlet ports on the left, applicable for $\phi 10-22\text{mm}$ cable.
- Max capacity: 48F.
- Outdoor or corridor wall-mounting or pole-mounting, protection grade: IP55.
- Made of high quality surface sprayed cold rolled steel plate.
- Single door, flip structure.
- Applicable for 4x1:4, 4x1:8, 2x1:16 or 1x1:32 module type splitter.
- Applicable for FC, SC, ST adapters.
- Reliable cable fixing, peeling protection, grounding.
- Enough and independent inlet cable ports, soft cable is for branching.

订购指南 PURCHASE TIP

| 型号 Type | 产品尺寸 Size | 重量 Weight | 内包装尺寸 Inner carton size | 外包装尺寸 Outer carton size |
|-------------|---------------|-----------|-------------------------|-------------------------|
| GXF6-15N18A | 350x340x100mm | 6.2-8.5kg | 375x365x125mm | 400x390x400mm (3 pcs) |
| GXF6-15N18B | 460x340x100mm | 6.2-8.5kg | 485x365x125mm | 510x390x400mm (3 pcs) |

GXF6-15N22g

光缆分纤箱

FIBER OPTIC DISTRIBUTION BOX



多家运营商共享, 独立仓锁互不开启
Could be shared by multiple operators.



PLC光分路器安装装置
PLC splitter mounting kit.



单独的熔配仓位
Independent splice and distribution cabins.



产品概述

- 进线口为下进线6个端口，出线口上出线6个端口，满足 $\phi 10-22\text{mm}$ 的光缆。
- 最大容量36芯。
- 楼道壁挂、嵌埋安装，防护等级IP53。
- 采用优质的冷轧钢板，表面喷涂处理。
- 满足多家运营商共享，多家运营商仓锁互不开启。
- 每仓最大可安装1:16PLC光分路器1只、1:32PLC光分路器1只。
- 可安装FC、SC、ST适配器。
- 可靠的光缆固定、开剥保护、接地。
- 进线口充足独立，每仓独立熔接配线，分支光缆可为皮缆光缆。

DESCRIPTION

- 6 bottom inlet ports, 6 top outlet ports, applicable for $\phi 10-22\text{mm}$ cable.
- Max capacity: 36F.
- Corridor wall-mounting, Embedded in the wall, protection grade: IP53.
- Made of high quality surface sprayed cold rolled steel plate.
- Used for multiple operators with separate keys.
- Each cabin could be equipped with 1x1:16 PLC splitter or 1x1:32 PLC splitter.
- Applicable for FC, SC, ST adapters.
- Reliable cable fixing, peeling protection, grounding.
- Enough and independent inlet cable ports, independent splice and distribution for each cabin, soft cable for branching.

订购指南 PURCHASE TIP

| 型号 Type | 产品尺寸 Size | 重量 Weight | 内包装尺寸 Inner carton size | 外包装尺寸 Outer carton size |
|-------------|---------------|-----------|-------------------------|-------------------------|
| GXF6-15N22g | 800x600x150mm | 24-25kg | 800x600x150mm | 920x720x210mm |



一体式光分插片盒，即插即用
Integrated PLC splitter box, plug and play.



单开门翻转结构操作便捷
Single door, flip structure, easy in operation.



分支缆可为皮缆光缆
Branch cable could be soft cable.



GXF5-53-S288F3

光缆交接箱
OPTICAL CABLE DELIVERY BOX



无需二次调节，节约资源，降低线路损耗。
No need for second jumper connection which helps to reduce the loss.



产品概述

- 用于主干光缆与配线光缆在节点处的预留、直通及光纤的分配和调度。
模块化设计，配纤容量可分为288芯、576芯。
- 采用全不锈钢、优质冷轧板与SMC（玻璃钢）三种不同材料，
产品防护等级IP55。
- 光分路器安装数量：
S288F3可以安装20组1:8或10组1:16光分插片；
- 卡接式安装FC、SC、ST适配器。
- 可靠的光纤剥离、保护、固定、接地装置。
- 可配套底座落地、架空、壁挂三种安装方式。
- 提供直熔单元，可实现光纤的直熔操作；采用直熔单元，
可实现光缆的不剪断直通操作。
通过盒式光分路器，把主干光缆与配线光缆连接，无需二次跳接，
节约资源，降低线路损耗。

DESCRIPTION

- Mainly used to achieve the reservation, direct connection, distribution & allocation for feeder cable & distribution cable in the node.
- Modular design, max capacity: 288F or 576F.
- Could be made of SMC, stainless steel, cold rolled plate, protection grade: IP55.
- PLC splitter installation:
For S288F, it can be assembled with 6 sets of 1:8 PLC module type splitter.
- Plug-in installation for FC, SC, ST adapters.
- Reliable peeling protection, fixing, grounding.
- Installation method: Floor type, aerial, wall mount.
- Direct splice tray could be used for the direct connection for uncut cable.
- Connect the feeder cable and distribution cable with module type splitter, no need for second jumper connection which helps to reduce the loss.

订购指南 PURCHASE TIP

| 型号 Type | 名称 Name | 外形尺寸 Dimension | 安装方式 Mounting method |
|----------------|-----------------|----------------|----------------------|
| GXF5-53-S288F3 | 288芯光分交接箱 288F3 | 740×1450×370mm | 室外 |

GXF5-53-S576F

光缆交接箱
OPTICAL CABLE DELIVERY BOX

产品概述

- 用于主干光缆与配线光缆在节点处的预留、直通及光纤的分配和调度。
模块化设计，配纤容量可分为288芯、576芯。
- 采用全不锈钢、优质冷轧板与SMC（玻璃钢）三种不同材料，
产品防护等级IP55。
- 光分路器安装数量：
S576F可以安装16组1:32 PLC盒式光分路器
- 卡接式安装FC、SC、ST适配器。
- 可靠的光纤剥离、保护、固定、接地装置。
- 可配套底座落地、架空、壁挂三种安装方式。
- 提供直熔单元，可实现光纤的直熔操作；采用直熔单元，
可实现光缆的不剪断直通操作。
- 通过盒式光分路器，把主干光缆与配线光缆连接，无需二次跳接，
节约资源，降低线路损耗。

DESCRIPTION

- Mainly used to achieve the reservation, direct connection, distribution & allocation for feeder cable & distribution cable in the node.
- Modular design, max capacity: 288F or 576F.
- Could be made of SMC, stainless steel, cold rolled plate, protection grade: IP55.
- PLC splitter installation:
For S576F, it can be assembled with 16 sets of 1:32 PLC module type splitter.
- Plug-in installation for FC, SC, ST adapters.
- Reliable peeling protection, fixing, grounding.
- Installation method: Floor type, aerial, wall mount.
- Direct splice tray could be used for the direct connection for uncut cable.
- Connect the feeder cable and distribution cable with module type splitter, no need for second jumper connection which helps to reduce the loss.

订购指南 PURCHASE TIP

| 型号 Type | 名称 Name | 外形尺寸 Dimension | 安装方式 Mounting method |
|---------------|----------------|-----------------|----------------------|
| GXF5-53-S576F | 576芯光分交接箱 576F | 1545×1450×360mm | 室外 |



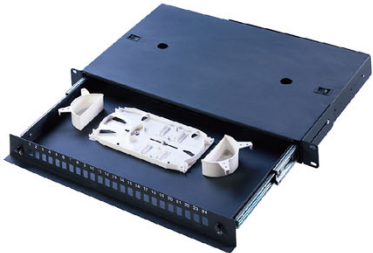
熔配单元旋转式结构，操作便捷、清晰标识易于管理
Rotary structure for the splice trays, easy in operation with clear labels.



JPF-1U/2U series

配线单元盒
FIBER MANAGEMENT TRAY

以其优良的光纤管理、便于使用、设计灵活而著称
Good performance on fiber management, easy in use.



我们的专业能为您带来价值，
您的满意是我们永远坚持追求的目标！

Our professionalism will bring you more value,
Your satisfaction is always our pursuit!

产品概述

- JPF系列单元盒集光纤熔接、配线、贮存、外接于一体，是19"标准机柜必备的辅助器件，广泛应用于光纤通信中的局域网、接入网。
- 单元盒采用抽拉式结构设计，操作极为方便。
- 用户可根据实际需要选配不同规格的适配器面板，用于安装FC、SC、ST及双芯SC等适配器。
- 单元盒采用精密轴承导轨，抽拉平稳、灵活。
- 可将光缆直接引入单元盒，并有光缆及钢芯的固定装置。

DESCRIPTION

- Series of this type combines with fiber splicing, distribution, storage, external on one item. It is a necessary auxiliary devices for 19" standard cabinet. And it is widely used in optical fiber communication LAN and access to network.
- The tray is designed as a drawer, which could be pulled out and pushed in easily for convenient operation.
- Different adapter panels are available according to the actual demands, applicable for FC, SC, ST and duplex cores SC adapters.
- It adopts precise bearing rail, smooth and flexible in pulling & pushing. Cables can be dropped directly into the management tray, fixing device for cable and steel core inside.

| 箱体材料 Box Material | 重量 Weight(kg) |
|----------------------------------|---------------|
| SPCC冷轧钢板 Cold rolled steel plate | 3.0 Kg |

订购指南 PURCHASE TIP

| 型号 Type | 产品名称 Name | 外形尺寸 Appearance size | 外包装尺寸 Outer Carton Size |
|----------|-----------------|----------------------|-------------------------|
| JPF-1U系列 | 1U光纤熔接配线单元盒 | 482×45×270(300)mm | 465×310×360mm (5 pcs) |
| JPF-2U系列 | 2U光纤熔接配线单元盒360F | 482×89×270(300)mm | 465×325×560mm (5 pcs) |